

Grounding Stud 7172 and 7173

Application

Designed to help prevent static electricity from being generated during the filling process. Used in conjunction with a grounding clamp assembly at a bulk tank facility.

Features

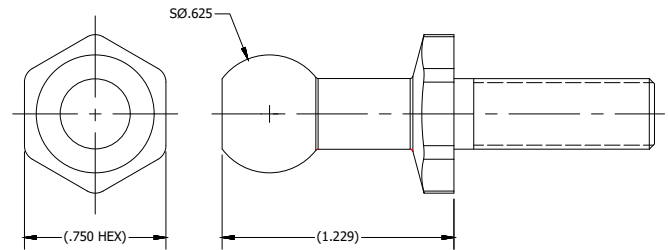
- .625" Rounded Ball stud
- 3/8" or 1/2" Threads available
- Washer and nut included

Materials

Stud Brass
 Washer Stainless Steel
 Nut Stainless Steel



7171



GROUNDING LUG
7171 SERIES

Part Number	Thread	"L"
7172	3/8"	1.063
7173	1/2"	